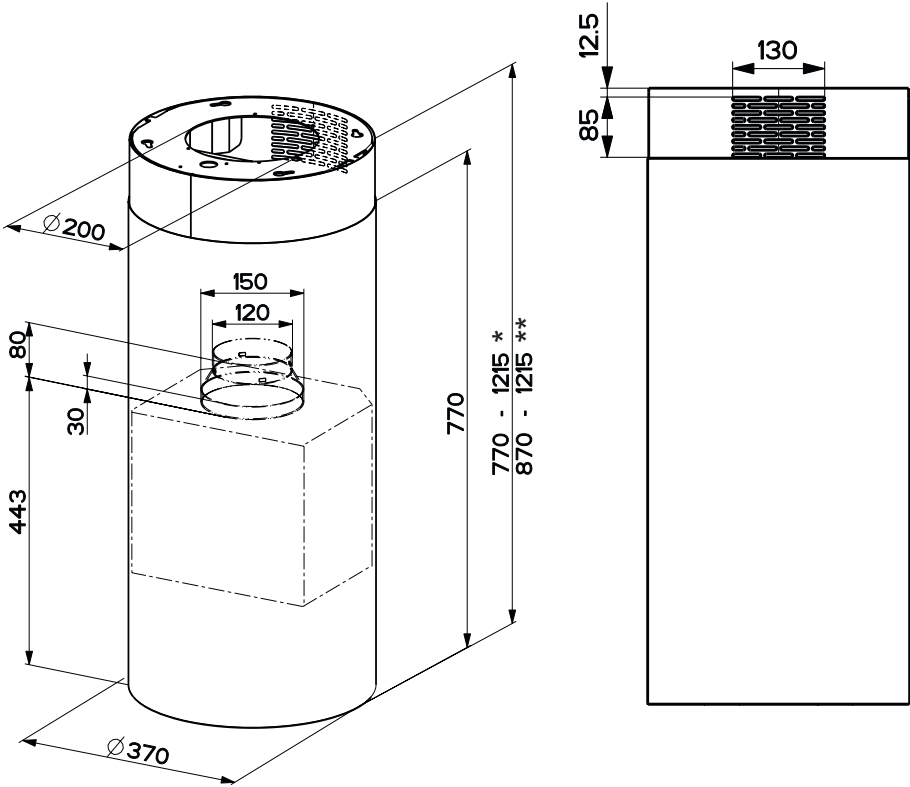


CHARACTERISTICS

Dimensions



* Dimensions of the hood in ducting version.

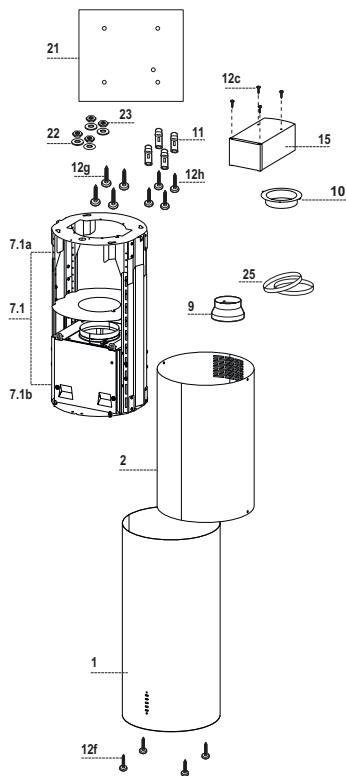
** Dimensions of the hood in recycling version.

Components

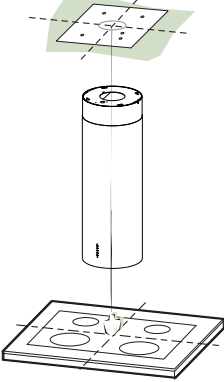
| Ref. | Q.ty | Product Components |
|------|------|--|
| 1 | 1 | Hood Body, complete with: Controls, Light, Blower, Filters |
| 2 | 1 | Chimney Upper |
| 7.1 | 1 | Telescopic frame complete with extractor, consisting of: |
| 7.1a | 1 | Upper frame |
| 7.1b | 1 | Lower frame |
| 9 | 1 | Reducer Flange \varnothing 150-120 mm |
| 10 | 1 | Flange \varnothing 120 mm |
| 15 | 1 | Recirculation Air Outlet Connection |
| 25 | 2 | Pipe clamps |

| Ref. | Q.ty | Installation Components |
|------|------|-----------------------------|
| 11 | 4 | Wall Plugs \varnothing 10 |
| 12c | 4 | Screws 2,9 x 6,5 |
| 12f | 4 | Screws M6 x 10 |
| 12g | 4 | Screws M6 x 80 |
| 12h | 4 | Screws 5,2 x 70 |
| 21 | 1 | Drilling template |
| 22 | 4 | 6.4 mm int. dia washers |
| 23 | 4 | M6 nuts |

| Q.ty | Documentation |
|------|--------------------|
| 1 | Instruction Manual |



INSTALLATION



Drilling the Ceiling/shelf and fixing the frame

DRILLING THE CEILING/SHELF

- Use a plumb line to mark the centre of the hob on the ceiling/support shelf.
- Place the drilling template **21** provided on the ceiling/support shelf, making sure that the template is in the correct position by lining up the axes of the template with those of the hob.
- Mark the centres of the holes in the template.
- Drill the holes at the points marked:
 - For concrete ceilings, drill for plugs appropriate to the screw size.
 - For hollow brick ceilings with wall thickness of 20 mm: drill \varnothing 10 mm(immediately insert the Dowels **11** supplied).
 - For wooden beam ceilings, drill according to the wood screws used.
 - For wooden shelf, drill \varnothing 7 mm.
 - For the power supply cable feed, drill \varnothing 10 mm.
 - For the air outlet (Ducted Version), drill according to the diameter of the external air exhaust duct connection.
- Insert two screws of the following type, crossing them and leaving 4-5 mm from the ceiling:
 - For concrete ceilings, use the appropriate plugs for the screw size (not provided).
 - for Cavity ceiling with inner space, with wall thickness of approx. 20 mm, Screws **12h**, supplied.
 - For wooden beam ceilings, use 4 wood screws (not provided).
 - For wooden shelf, use 4 screws **12g** with washers **22** and nuts **23**, provided.